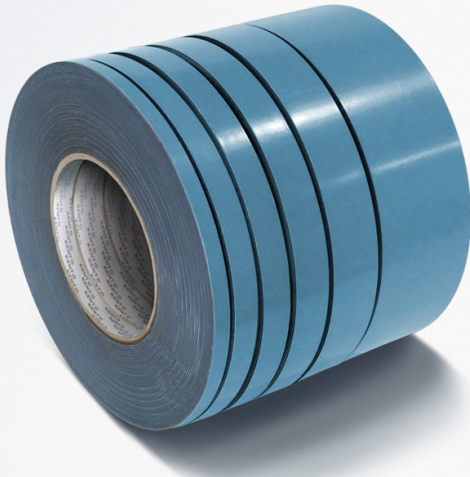




High Strength Tape

A high peel strength double sided tape which can be used on most smooth hard surfaces including metals, plastics, painted and lacquered surfaces.



Features & Benefits

- Short term repositionable bond - for a precise positioning
- High ultimate bond - excellent alternative for mechanical fittings
- Superior adhesion to stainless steel, painted steel, polycarbonates, acrylics, aluminium, dibond, glass, GRP, wood, smooth masonry, etc.
- Good low temperature flexibility
- Extremely weather- and chemical resistance
- Leaves no residues when removed
- Absorbs shocks and vibrations

P/N	Product	S/C	Dimensions
34000	High Strength Tape	HST6	6 mm x 15 m roll
34117	High Strength Tape	HST6	6 mm x 7 m roll
34118	High Strength Tape	HST9	9 mm x 15 m roll
34119	High Strength Tape	HST12	12 mm x 7 m roll
34447	High Strength Tape	HST12	12 mm x 15 m roll
34120	High Strength Tape	HST16	16 mm x 7 m roll
34448	High Strength Tape	HST16	16 mm x 15 m roll
34121	High Strength Tape	HST25	25 mm x 7 m roll
34449	High Strength Tape	HST25	25 mm x 15 m roll
86384	High Strength Tape	HST50	50 mm x 15 m roll

Application

High Strength Tape has been designed for industrial & automotive applications which involve bonding a fixture to a smooth hard substrate.

Automotive applications: bumper inserts, plastic side mouldings to vehicles, workshop signs, side-skirts and spoiler kits, head, tail and side light lenses, **Industrial applications:** emblems, nameplates, signs, mirrors, terminal rails, exhibition display panels, sensors, safety signage, etc. in hospitals, retirement homes, nurseries, schools, shopping malls, hotels, signmakers, property management companies, technical departments, etc.

Instructions

1. Clean and degrease both surfaces with either Acrysol or Soft Surface Cleaner.
2. Cut suitable length of tape and apply to one surface ensuring 100% contact. Align pieces and lightly press into position
3. Re-align if necessary, within 5 minutes.
4. After re-alignment, firmly press work pieces together.

Full strength is achieved after 24 hours. Surfaces should be about 15° C to ensure adhesive bonds properly.



Technical Information

Carrier:	High density polyurethane foam
Adhesive layer:	High tack acrylic
Colour:	Black
Length:	7 to 15 m
Width:	6 to 50 mm
Thickness:	1 mm
Density	480 kg/m ³ (ASTM D3574)
Shelf life:	12 months
Custom tariff code:	39191039
VOC:	0

90 ° peel adhesion:

Stainless steel (20 minutes)	~17.5N/cm
Stainless steel (72 hours)	~ 24.5N/cm
Painted panel (20 minutes)	~ 10.5N/cm
Painted panel (72 hours)	~ 12.2N/cm

Dynamic tensile adhesion:

1 hour dwell time, alu to alu: ~ 931 kPa (9.5 kg/cm²)

Dynamic shear adhesion:

1 hour dwell time, alu to alu: ~ 717 kPa (7.3 kg/cm²)

Elongation: ~275% ASTM D412 Die C

Modulus: ~ 1410 kPa ASTM D3574 (14.4 kg/cm²)

Tear Strength: ~ 15 kN/m ASTM D624 Die C

Tensile strength: ~3137 kPa ASTM D412 Die C (32 kg/cm²)

Temperature resistance: -40°C - 100°C



SDS available on www.kenteurope.com

Terms and Conditions

No part of this publication may be reproduced, transmitted or stored, electronically, mechanically or photocopied without the prior permission of KENT (United Kingdom) Ltd. This data sheet and its contents (the "Information") belong to KENT (United Kingdom) Ltd., or are licensed to it. No license is granted for the use of it other than for information purposes in connection with the products to which it relates. No license of any intellectual property rights is granted.

The Information is subject to change without notice and replaces all data sheets previously supplied. The Information supplied is believed to be accurate but the Group assumes no responsibility for its accuracy or completeness, any error from or omission in it nor for any use made of it. Users of this data sheet should check for themselves the Information and the suitability of the products for their purpose and not make any assumptions based on information included or omitted. Liability for loss or damage resulting from any reliance on the Information or use of it (including

liability resulting from negligence or where the Group was aware of the possibility of such loss or damage arising) is excluded. This will not operate to limit or restrict the Group's liability for death or personal injury resulting from its negligence. KENT is the trading name of KENT (United Kingdom) Ltd.

Registered Office: Amber House,
Showground Road, Bridgewater, Somerset, United Kingdom TA6 6AJ
All rights reserved

KENT (United Kingdom) Ltd, Forsyth House, Pitreavie Drive, Pitreavie Business Park, Dunfermline, Fife KY11 8US Tel : 0800 136925 or 01383 723344 between 08:30-17:30
Monday-Thursday, 09:00-15:00 on Fridays'. For out of hours queries please Fax us on 01383 735829 or Email: kentinfo.uk@kenteurope.com

REV: 03.08.2017