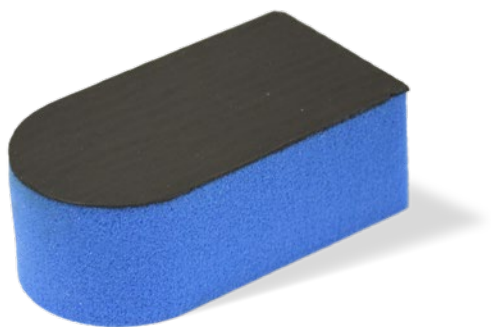




# Smoother Sponge

A special rubber polymer sponge to remove deposits and contaminations from paints, glass, plastics and other hard surfaces.



## Features & Benefits

- Contains new rubber polymer – lasts 4 times longer than clay products.
- Can be reused up to 50 times – time and money saving product
- Removes all kind of contaminations – one product for all cleaning applications
- Easy to use – no kneading required

P/N	Product	S/C	Packaging
86625	Smoother Sponge	KSS	1 per pack

## Application

The Smoother Sponge contains a new revolutionary rubber polymer that replaces traditional clay products and reliably removes contaminations such as overspray, lime scale stains, resins of trees, dust and rust rail, brake dust, industrial deposits, insects, etc.

The solid polymer doesn't have solvent or hazardous ingredients and has no negative effect on paint layers. The Smoother Sponge works perfectly with KENT Long Lasting Shine and can also be used on mirrors, bumpers, windows and rubber.

## Instructions

1. Be sure the surface to be treated and the Smoother Sponge are free of dust or any other contaminants which could create scratches.
2. Lubricate the surface with Long Lasting Shine.
3. Rub with medium pressure and in straight lines with the Smoother Sponge.
4. Always keep the surface well lubricated.
5. Wipe the cleaned surface with KENT Finishing Microfibre Cloths

N.B.:

- First use the Smoother Sponge for 60 seconds on glass to remove the protective coat and to soften the polymer. Never use on dirty cars or on hot surfaces!
- Don't put the Smoother Sponge in a washing machine or dryer. After use, rinse with water and let dry.
- Work on small areas of about 30 x 30 cm.



## Technical Information

### General info:

<b>Base:</b>	solid rubber polymer
<b>Appearance / colour:</b>	blue – black
<b>Measureings:</b>	11 x 6 cm
<b>Odour:</b>	n/a
<b>Specific gravity:</b>	n/a
<b>pH:</b>	n/a
<b>Shelf life:</b>	5 years
<b>Custom tariff code:</b>	34059090
<b>Accessories:</b>	n/a

---



SDS available on [www.kenteurope.com](http://www.kenteurope.com)

#### Terms and Conditions

No part of this publication may be reproduced, transmitted or stored, electronically, mechanically or photocopied without the prior permission of name KENT (United Kingdom) Ltd. This data sheet and its contents (the "Information") belong to the name KENT (United Kingdom) Ltd. or are licensed to it. No license is granted for the use of it other than for information purposes in connection with the products to which it relates. No license of any intellectual property rights is granted.

The Information is subject to change without notice and replaces all data sheets previously supplied. The Information supplied is believed to be accurate but the Group assumes no responsibility for its accuracy or completeness, any error from or omission in it nor for any use made of it. Users of this data sheet should check for themselves the Information and the suitability of the products for their purpose and not make any assumptions based on information included or omitted. Liability for loss or damage resulting from any reliance on the Information or use of it (including

liability resulting from negligence or where the Group was aware of the possibility of such loss or damage arising) is excluded. This will not operate to limit or restrict the Group's liability for death or personal injury resulting from its negligence KENT is the trading name of name KENT (United Kingdom) Ltd.

**Registered Office:** Amber House,  
Showground Road, Bridgewater, Somerset, United Kingdom TA6 6AJ  
*All rights reserved.*

**KENT (United Kingdom) Ltd, Forsyth House, Pitreavie Way, Pitreavie Business Park, Dunfermline, Fife KY11 8US** Tel : 0800 136925 or 01383 723344 between 08:30-17:30 Monday-Thursday, 09:00-15:00 on Fridays'. For out of hours queries please Fax us on 01383 735829 or Email: [KENTsales.UK@kenteurope.com](mailto:KENTsales.UK@kenteurope.com)

REV: 10/12/2018